

MONTHLY MEMBERSHIP PROGRESS REPORT

LOCATION GREECE

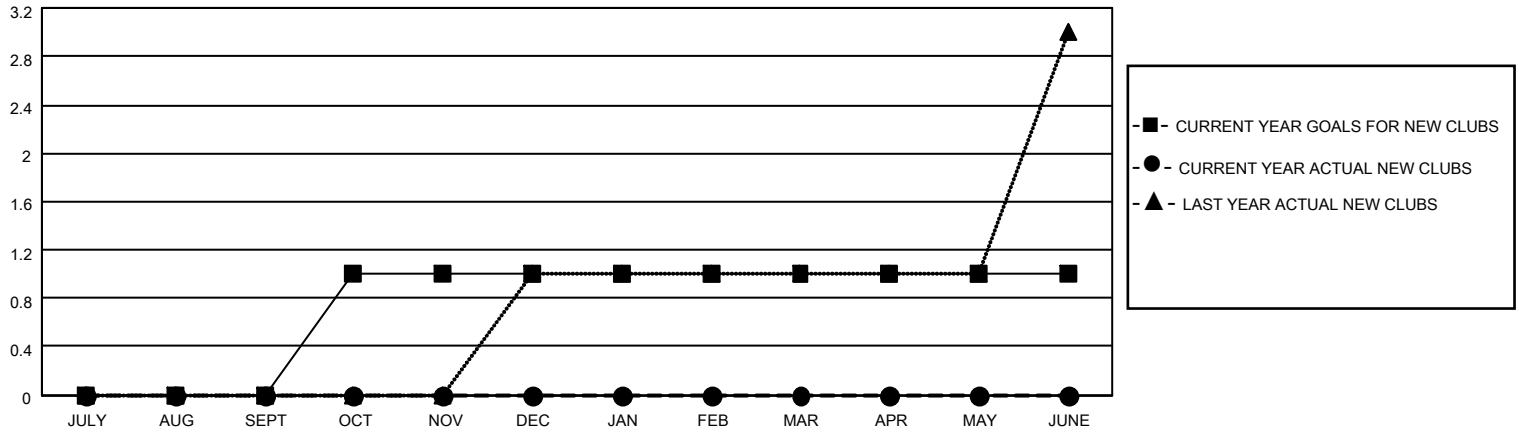
District 117 B

Results as of: 4/30/2023

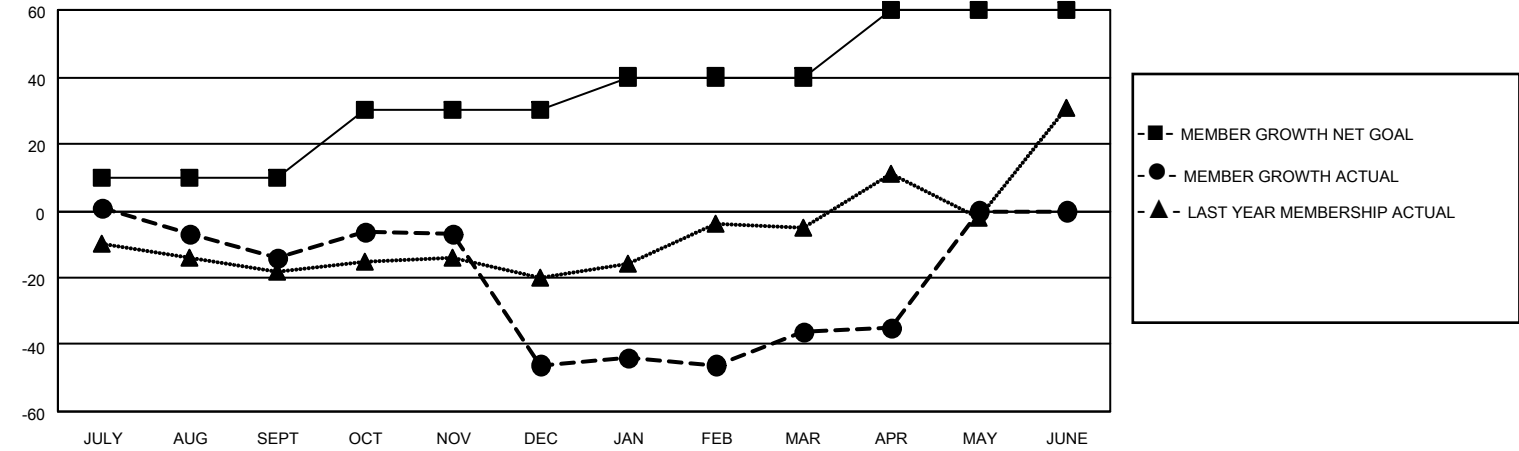
Clubs			
RESULTS FOR 2022-2023			
QUARTER	NEW CLUB GOAL	NEW CLUBS	DROPPED CLUBS
JULY/AUG/SEPT	0	0	0
OCT/NOV/DEC	1	0	1
JAN/FEB/MAR	0	0	0
APR/MAY/JUNE	0	0	0

Members			
RESULTS FOR 2022-2023			
QUARTER	MEMBER GROWTH NET GOAL	MEMBER GROWTH ACTUAL	DROPPED MEMBERS ACTUAL (including transfers)
JULY/AUG/SEPT	10	11	23
OCT/NOV/DEC	20	29	60
JAN/FEB/MAR	10	30	14
APR/MAY/JUNE	20	5	4

GOALS AND ACTUAL NEW CLUBS CUMULATIVE



GOALS AND ACTUAL MEMBERS CUMULATIVE



DROPPED CLUBS: 1	
DROPPED MEMBERS	
DECEASED	9
CLUB CANCELLED	19
OTHER	73
TOTAL	101

24 CLUBS OF 56 ADDED 1 OR MORE NEW MEMBERS

[CLICK HERE FOR CUMULATIVE MEMBERSHIP DATA](#)

<u>GENDER DISTRIBUTION</u>	
MALE	529 (43.22%)
FEMALE	694 (56.70%)
NON BINARY	0 (0.00%)
PREFER NOT TO ANSWER	1 (0.08%)
TOTAL FAMILY UNIT MEMBERS	275
FAMILY MEMBERS PAYING HALF DUES	153